



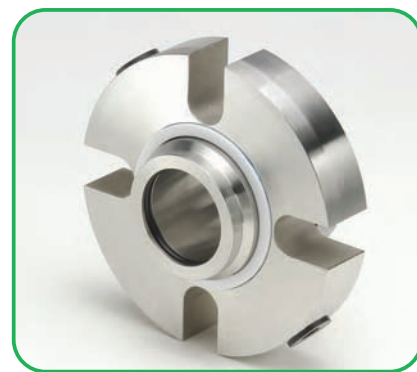
SELLOS MECÁNICOS

GARNITURES MÉCANIQUES

390 D

MECHANICAL SEALS

GLEITRINGDICHTUNGEN



Cartucho doble, equilibrado, muelles múltiples y sentido de rotación independiente.

Cartouche double, équilibrée, ressorts multiples et sens rotation indépendant.

Cartridge double seal, balanced, multi-spring and independent on direction of rotation.

Doppelte Cartridgedichtung, entlastet, mehrere Federn und drehrichtungsunabhängig.

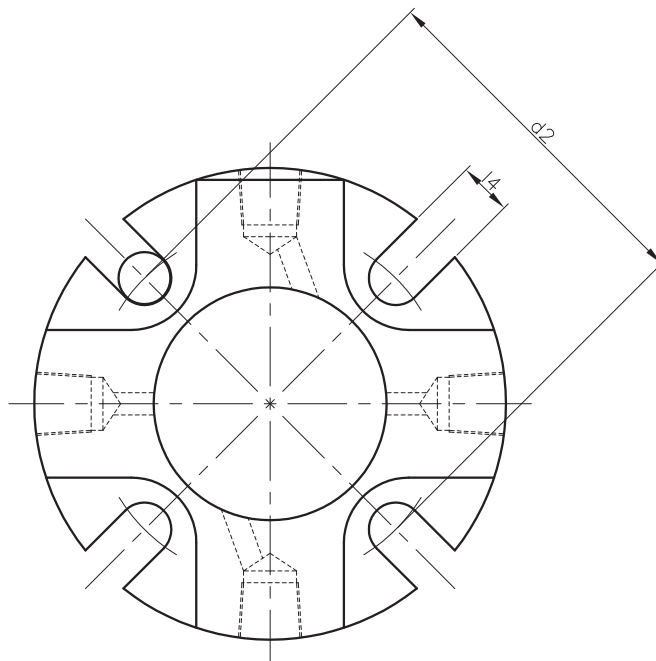
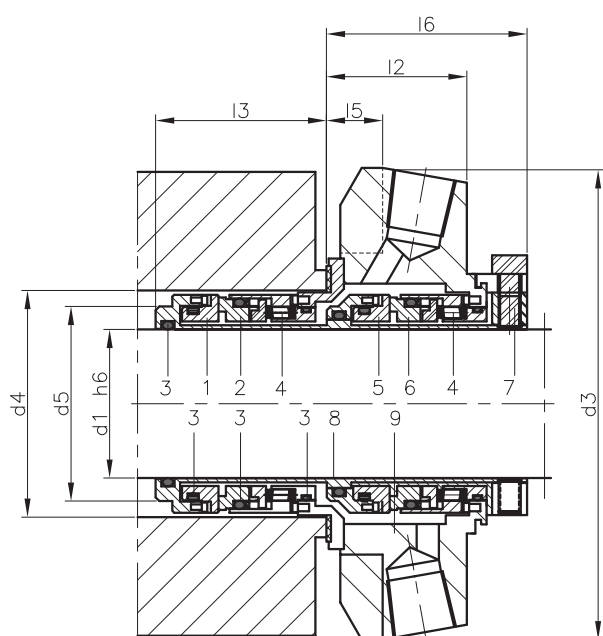
TABLA DIMENSIONAL (Dimensiones en mm. sujetas a variaciones o modificaciones)

TABLEAU DIMENSIONNEL (Dimensions en mm. sujettes à variations ou modifications)

Ref.	d ₁	d ₂	d ₃	d ₄ Min.	d ₄ Max.	d ₅	l ₂	l ₃	l ₄	l ₅	l ₆
25	25	71.2	101.6	41.3	48.0	39.7	34.4	44.5	13.3	13.5	49.6
28	28	74.5	104.8	44.5	51.2	42.9	36.7	45.4	13.3	13.5	52.4
30	30	79.9	108.0	46.1	56.5	44.5	36.7	45.4	13.3	13.5	52.4
32	32	81.6	108.0	47.6	58.3	46.0	36.7	45.4	13.3	13.5	52.4
33	33	84.8	111.1	50.8	61.5	49.3	36.7	45.4	13.3	13.5	52.4
35	35	84.8	111.1	50.8	61.5	49.3	36.7	45.4	13.3	13.5	52.4
38	38	91.4	123.8	57.2	68.1	55.5	37.8	47.5	13.3	15.1	54.0
40	40	95.7	127.0	60.3	71.4	58.7	37.8	47.5	14.3	15.1	54.0
43	43	98.4	133.4	63.0	74.1	61.1	37.8	47.5	14.3	15.1	54.0
45	45	98.4	133.4	63.0	74.1	61.1	37.8	47.5	14.3	15.1	54.0
48	48	98.4	133.4	66.7	74.1	64.7	37.8	47.5	14.3	15.1	54.0
50	50	101.6	139.7	70.0	76.6	67.9	40.7	51.9	17.4	15.1	58.7
53	53	113.5	148.8	73.0	85.3	71.1	40.7	51.9	17.4	15.1	58.7
55	55	113.5	148.8	75.0	85.3	72.9	40.7	51.9	17.4	15.1	58.7
58	58	116.0	165.1	76.2	88.5	74.2	40.7	51.9	17.4	15.1	58.7
60	60	119.9	165.1	79.4	91.7	77.4	43.6	52.8	17.4	15.9	62.6
63	63	127.0	171.5	85.7	98.8	83.8	43.6	50.3	17.4	15.9	65.1
65	65	127.0	171.5	85.7	98.8	83.8	43.6	50.3	17.4	15.9	65.1
68	68	131.3	171.5	92.1	103.2	90.2	41.3	53.2	17.4	15.9	63.5
70	70	131.3	171.5	92.1	103.2	90.2	41.3	53.2	17.4	15.9	63.5
75	75	145.3	196.9	101.6	113.5	98.1	45.4	51.6	20.6	17.4	65.1
80	80	148.5	188.9	105.0	116.8	102.2	40.5	55.3	20.6	17.4	63.8
85	85	154.8	206.4	111.1	123.2	107.9	40.5	54.0	20.6	17.4	65.1
90	90	158.6	212.7	117.5	129.5	114.3	40.5	54.0	17.5	17.4	65.1
95	95	172.0	222.3	120.0	132.1	117.5	40.5	54.0	17.5	17.4	65.1
100	100	171.7	228.6	127.0	139.7	123.8	40.5	54.0	20.6	17.4	65.1
105	105	174.9	228.6	130.2	142.9	127.0	40.5	54.0	20.6	17.4	65.1
110	110	184.4	241.3	139.7	152.4	136.5	40.5	54.0	20.6	17.4	65.1
115	115	184.4	241.3	146.1	152.4	136.5	40.5	54.0	20.6	17.4	65.1
120	120	192.4	263.5	146.1	160.4	142.9	40.5	54.0	20.6	17.4	65.1
125	125	254.0	304.8	171.7	184.4	155.6	44.4	62.8	20.6	17.4	77.3
130	130	260.4	311.2	178.1	190.8	161.9	44.4	62.8	20.6	17.4	77.3
135	135	266.7	322.3	190.5	203.2	168.3	44.4	62.8	20.8	17.4	77.3
140	140	266.7	322.3	190.5	203.2	168.3	44.4	62.8	20.8	17.4	77.3

DIMENSIONS TABLE (Measures in mm. subject to change)

TABELLE DER ABMESSUNGEN (In mm. Abweichungen oder Änderungen vorbehalten)



LÍMITES OPERATIVOS / LIMITES D'UTILISATION / OPERATING LIMITS / EINSATZGRENZEN

$d_1 = 25 \div 140 \text{ mm}$

$p/d = 20 \text{ Kg/cm}^2$

$v/g = 25 \text{ m/s}$

$t = -20 \div +200^\circ\text{C}$

Los límites operativos vienen condicionados por el factor PV

Les limites d'utilisation ci-dessus peuvent varier en fonction du facteur PV

The operating limits depend on the PV factor

Die Einsatzgrenzen werden durch den DG-Faktor festgelegt

MATERIALES / MATÉRIAUX / MATERIALS / MATERIALIEN

QBEGGBQ	QQEGGBQ	QQEGGQQ
QBPGGBQ	QQPGGBQ	QQPGGQQ
QBVGGBQ	QQVGGBQ	QQVGGQQ
QBKGGBQ	QQKGGBQ	QQKGGQQ
QBMGGBQ	QQMGGBQ	QQMGGQQ

Existen otras combinaciones de materiales

Il existe d'autres combinaisons de matériaux

Available in other materials

Es gibt andere Materialkombinationen

COMPONENTES / CONSTRUCTION / COMPONENTS / KOMPONENTEN

1 Cara de roce / Grain /
Face / Gleitfläche

2 Cara de roce / Grain /
Face / Gleitfläche

3 Junta tórica / Joint torique /
O-ring

4 Muelle / Ressort /
Spring / Feder

5 Cara de roce / Grain /
Face / Gleitfläche

6 Cara de roce / Grain /
Face / Gleitfläche

7 Tornillo de fijación / Vis d'attache /
Set screw / Befestigungsschraube

8 Armadura metálica / Corps /
Metal frame / Metallgestell

9 Brida / Bride /
Flange / Flansch



LIDERING, S.A.

Pg. Ferrocarrils Catalans, 106-108 • 08940 Cornellà de Llobregat BARCELONA

Domestic Sales: 902 480 440

International Sales: +34 93 480 44 22

Fax 93 480 44 04



Pollensa, 2, Ofic. 8. Edif. Artemisa - Tartessos

28290 Las Rozas MADRID

Tel. 902 480 440 • Fax 91 361 40 20

LIDERING, S.A.R.L.

Parc des Aqueducs • Chemin du Favier RD 42 • 69230 Saint-Genis-Laval FRANCE

Tél. 04 72 67 02 67 • Fax 04 78 56 04 08

LIDERING, GmbH

Schiessstraße, 55 • 40549 Düsseldorf DEUTSCHLAND

Tel. 00 34 93 480 44 22 • Fax 00 34 93 480 44 04

S.A. LIDERING N.V.

BP 10 • 1410 Waterloo BELGIQUE-BELGIË

Tél. 00 34 93 480 44 22 • Fax 00 34 93 480 44 04

<http://www.lidering.com>

email: info@lidering.com